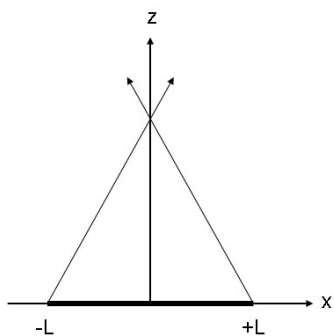


姓名：_____ 學號：_____ 系級：_____

Problem 1 (50 %)

(1) Find the electric field a distance z above the midpoint of a straight line segment of length $2L$, which carries a uniform line charge λ (30%); (2) Check the case $z \gg L$ (10%); (3) Also check the case $L \rightarrow \infty$ (10%)



Problem 2 (50 %)

(1) Find the electric field a distance z above the center of a square plane (side a) carrying uniform surface charge density σ (30%); (2) Check the cases as $z \rightarrow \infty$ (10%) and $a \rightarrow \infty$ (10%), respectively.

